



Acrylic Painting Skill Building Class: Focus will be on painting with the free-motion stitching at Home....Instructions for what you need is listed below the end. Most attendees love painting with acrylic paints during class, so they do the quilting at home.

What you need and what to bring to your Acrylic Painting Skill Building Class.

Need (below) Jacquard Acrylic Lumiere Exciter Pack 9 Jewel Color Set.

Available on Amazon Or use another equivalent to this acrylic paint (fabric dye will not work on this project. **Sample shown. (Suggestion: Some attendees share their supplies.)**



Need below 30675 Ultimate Marking Pencil White Iron Off by Hancy. Available on Amazon or use another equivalent to this white heat erase pencil. You will be used to mark your design on your black 100% cotton fabric.

Important to use Your pencil because we until heat is



white ultimate marking Pencil to draw your design onto black cotton fabric. It is important to use this type of do not want the design to brush off. It only disappears applied after all your painting is done and dry.

Use your white heat erasing pencil to form or draw a box around your project. Used as guidelines to remind you do not paint beyond the box lines.

- Cut a piece of 100% cotton black fabric, black low loft batting and black fabric for backing about the size of 24inches wide and 20 inches long. **NO CANVAS REQUIRED.**
- **When you sign up for the acrylic painting class,** you will be given paper design of a tropical fish to trace onto your black fabric.
- **Homework to be done at home before class:**
- **Print fish design as a poster (4 sheets of paper).** I use adobe program that allows me to print posters.
- **Place freezer paper** with shinny side up under your black fabric. Iron both sides making sure no wrinkles in black fabric. Protect your iron from freezer paper.

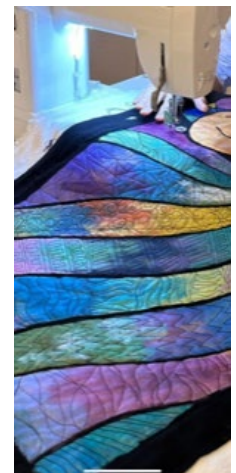


- **Trace fish design** using the white iron off pencil then use a light box or a window to trace. Use a few strips of masking tape on corners of your printed fish design and our black fabric. This tape holds both these articles in place to help you connect lines evenly.
 - **After tracing your design**, draw a box with the white iron off marking pencil as a reminder... do not to paint beyond the box. This gives you boundaries.
 - **Bring a variety of small inexpensive paintbrushes for detailed work** so you have a variety to choose from.
 - **Bring an old plastic ice cube tray or large paper plate to be used for your palette.**
 - **Bring small sturdy throughway cup to rinse your brushes few & paper towels to dry brushes.**
 - **Bring a few newspapers or piece of plastic to put under your project to protect your table. This will protect your table surface from the wet paint.**
- Bring your enthusiasm to class** to have fun to let the magic begin in your design.

BRING extra freezer paper to put loosely on your painted black fabric (put on top and bottom)...this is so you can roll it up to take home safely.

You will be Finishing your project at home with free motion sewing.
Steps to follow when you at home to finish:

- **After class when you are home....** use your Black Sharpie Pen to make your black areas between the painted areas more distinct. By doing this, it clarifies the lines. Or it can cover up painted areas that you don't want on the fabric
- **Pin size of a fist in the black areas. Remove pins as you sew.**
- **Start your free-motion stitching using your sewing machine**.....you can use any pattern you want to use. Practice different stitches like in photo to the right.
- **Feed dogs are in down position and use an open toe embroidery foot for free motion stitching. Use embroidery foot (open toe foot**





works best) or a darning foot for your machine. Use a regular foot to sew straight lines with feed dogs up.

- Your regular sewing open toe foot does not work with this project expect when you do straight lines.
- If you do not have an embroidery foot you will need to place your fabric in an embroidery hoop that just holds fabric down on your sewing surface. You cannot use a hoop set that puts the fabric in the hoop which tightens the fabric between the two hoops.

Sewing tools: 2-3 new needles (size 90/14 or 80/12), small sharp, pointed scissors, safety pins, small, pointed tweezers, **black sharp marking pen,**

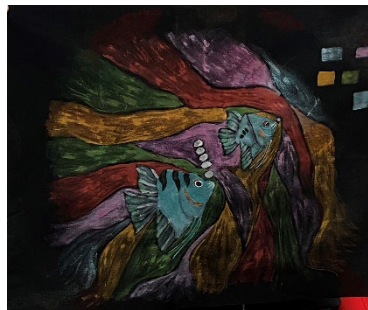
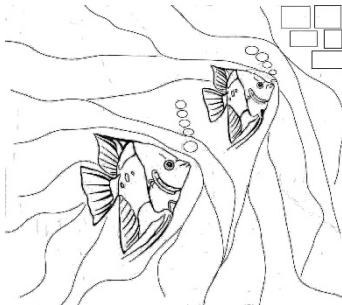
Single stitch throat plate recommended. A regular plate does work.

Use black cotton thread (40-50 wt.)

Optional: Sewer's Aid Lubricant. This helps the thread stitch smoothly through the fabric.

Quilting gloves if you are use to using them while quilting.

Sample of fish outline designs and one of many possible paintings.



Fish outline design for class

One attendee's interpretation of her fish outline design